

5.4 pg. 315 #8-28 even & 29

8) $y+4 = 6(x-3)$

24) see graphs
26)

10) $y+7 = \frac{4}{5}(x+2)$

12) see graph

28) (A)
AB

$y-1 = \frac{1}{3}(x+3)$

or
 $y-3 = \frac{1}{3}(x-3)$

16) $y-3 = \frac{4}{3}(x-1)$

or
 $y+1 = \frac{4}{3}(x+2)$

BC $y-3 = -3(x-3)$

or
 $y-0 = -3(x-4)$

18) $y-2 = \frac{3}{4}(x-1)$

or
 $y+1 = \frac{3}{4}(x+3)$

answers
can
vary

CD $y = \frac{1}{3}(x-4)$

or
 $y+2 = \frac{1}{3}(x+2)$

20) $(2, 4)$ $\frac{4+6}{2+3} = \frac{10}{5} = 2$

$(-3, -6)$
 $y-4 = 2(x-2)$

or
 $y+6 = 2(x+3)$

(B) \longrightarrow

AD $y-1 = -3(x+3)$

or
 $y+2 = -3(x+2)$

22) $y = mx + b$

$\frac{56-44}{2-3} = \frac{12}{-1} = -12$

$y = -12x + 80$

$y-56 = -12(x-2)$

$y-44 = -12(x-3)$

$y-20 = -12(x-5)$

28) B) parallel lines have the same slopes
 \overline{AB} & \overline{CD} have slope = $\frac{1}{3}$
 \overline{BC} & \overline{AD} have slope = -3

c) same slope of -7 , use given ordered pair

$$y + 4 = -7(x - 0)$$

or

$$y + 4 = -7x$$

29) $(8,000, 197.6)$
 $(4,500, 203.9)$

$$y = mx + b$$

$$b = m(a) + b$$

$$\frac{197.6 - 203.9}{8,000 - 4,500} = \frac{-6.3}{3,500} = -0.0018$$

$$b = -0.0018(a) + b$$

$$197.6 = -0.0018(8,000) + b \quad \textcircled{A}$$

$$197.6 = -14.4 + b$$

$$+14.4 \quad +14.4$$

$$212 = b$$

$$b = -0.0018a + 212$$

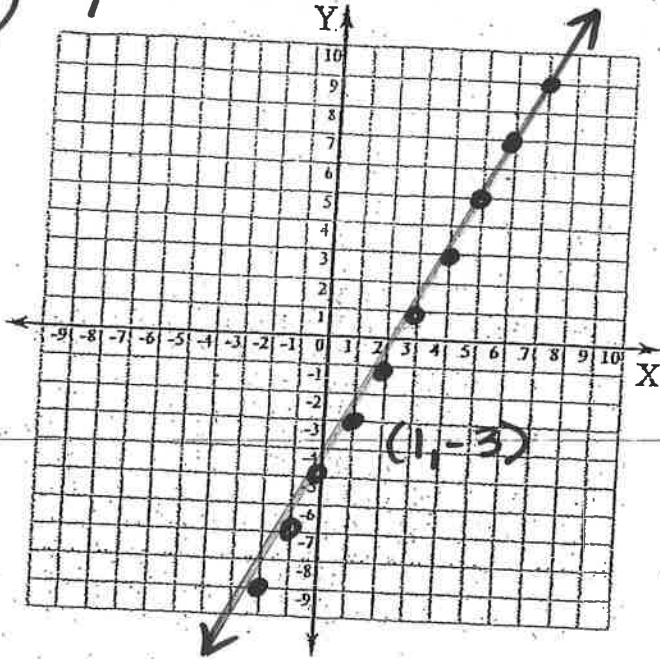
$$\textcircled{B} \quad b = -0.0018(2,500) + 212$$

$$b = 207.5^\circ \text{F}$$

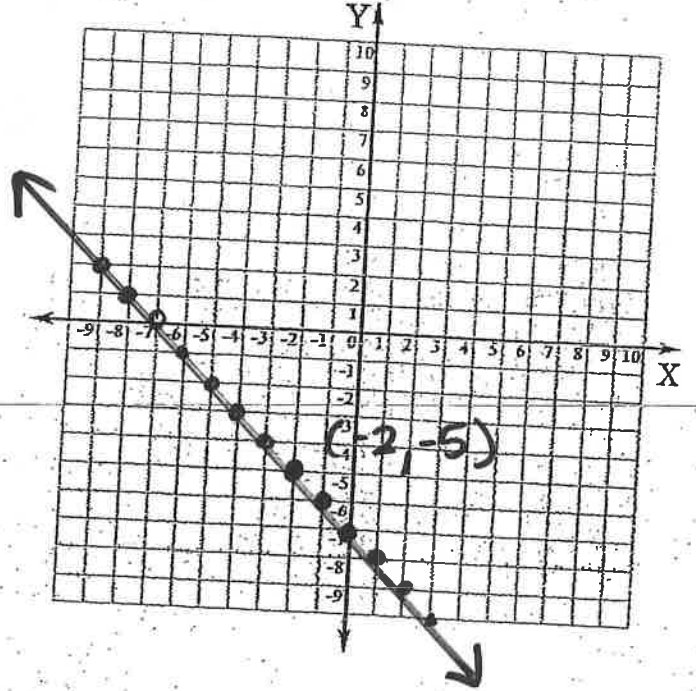
$$y = mx + b$$

5.4 homework pg. 315

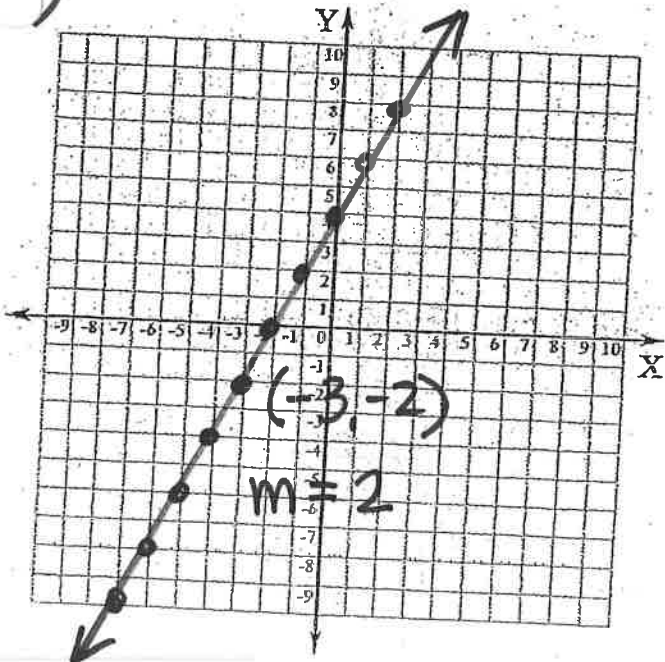
12) $y+3=2(x-1)$



14) $y+5=-(x+2)$



21)



26)

