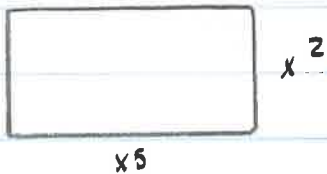


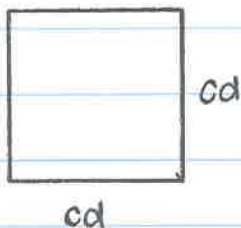
Directions #1-5: Find the area of each figure.  
#6-10:

①



⑥ What is the area of a square with the length of side equating  $3a^5$ ?

②



⑦ What is the area of a rectangle with the width of  $bx^2$  & the length of  $12x^3$ ?

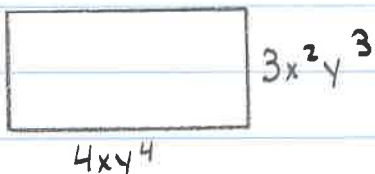
③



⑧ Find the volume of a cube that has a side length of :

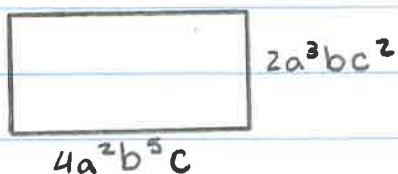
- a)  $2x$
- b)  $4x$
- c)  $8x$

④



⑨ Find the volume of a sphere that has a radius of  $6y^4$  cm. ( $V = \frac{4}{3}\pi r^3$ ). Use 3.14 for  $\pi$ .

⑤



⑩ Find the area of a trapezoid that has a height of  $7ab^3$ , a base of  $2b^2$  and another base of  $4b^2$ . ( $A = \frac{1}{2}(b_1 + b_2)h$ )