

Cause & Effect Absent Notes

Definition: Noting a relationship between actions or events such that one or more are the result of the other.

- Cause & effect is the relationship between two things when one thing makes something else happen.
- There can be more than one cause and effect in a situation.

EXAMPLE

The girl studied every night, got help from a tutor, and therefore did well on the test.

Cause: _____

Effect: _____

Can an effect ever be shown before the cause?

YES!

In the real world a cause always comes first, but an author may tell you the effect before the cause.

Remember: The cause answers the question, why??

EXAMPLE

The snowman melted and puddles formed on the ground because of the heat from the sun.

Cause: _____

Effect: _____

SIGNAL WORDS

The following are signal words to look for when trying to identify the cause.

- | | | |
|---------------|------------------|----------|
| *Because | *This is how | *Since |
| *For | *For this reason | *So |
| *Nevertheless | *As a result of | *So that |
| *Accordingly | *Consequently | *Due to |
| *Thus | *Therefore | |

Practice – Highlight the signal words, underline the cause, & circle the effect.

1. People choose to shop at the mall due to many stores being close together.
2. She had a lot of free time; consequently she spent the day reading a book.

Look at the following pictures and explain the cause and effect.



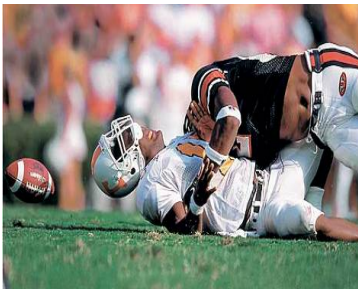
Cause:

Effect:



Cause:

Effect:



Cause:

Effect:

Using Inferences With Cause & Effect

- In some paragraphs, the cause-and-effect relationship is not directly stated.
- In these cases, you have to "read between the lines."
- Use clues from the paragraph to identify cause-and-effect relationships.

Practice #1

The crime rate in Mr. Leon's neighborhood was very high. Many houses had been robbed and cars vandalized. All the neighbors were upset. Within two weeks, the neighborhood's crime rate dropped drastically.

What inference can you make for the cause of the drop in crime rate?

Practice #2

About 75 million people died from the bubonic plague during the 14th century. Half of the population of Italy fell victim to the disease. The plague caused high fever, swollen glands, dark bruises or sores on the face, and spitting of blood. The disease was spread by fleas from rats. Lack of sanitation and poor medical knowledge account for the continuous plague epidemics throughout the 14th century.

What inference can you make for the effect the plague had on those that contracted it?

Practice #3

Carlos Palomino was a champion boxer. Yet he gave up boxing and earned a degree in recreation. Not everyone can become a paid athlete, he says. That's why school is so important for all young people. Carlos hopes his example will help others set high goals in education as well in sports.

What inference can you make about the cause for Carlos getting a degree in recreation?